

CHETWOOD
FINANCIAL LIMITED

Pillar 3 Disclosures

31 March 2018

Contents

1. Introduction.....	3
1.1. Overview.....	3
1.2. Summary analysis.....	3
1.3. Disclosure policy.....	4
1.3.1. Basis of preparation.....	4
1.3.2. Frequency, media and location of disclosures.....	4
1.3.3. Verification.....	4
2. Risk management objectives and policies.....	5
2.1. Key risks.....	5
2.2. Risk strategy.....	6
2.3. Risk management Framework.....	6
2.4. Risk Culture.....	6
2.5. Risk governance and control.....	7
2.6. Risk operating model.....	7
2.7. Monitoring and Reporting.....	8
2.8. Risk management processes.....	8
2.9. Risk Identification.....	8
2.9.1. Risk measurement.....	9
2.9.2. Risk appetite.....	9
2.9.3. Risk management.....	10
2.9.4. Risk Control Self-Assessment (RCSA).....	11
2.9.5. Key and Emerging Risk Register.....	11
2.9.6. Stress testing and scenario analysis.....	11
2.9.7. Compliance and customer outcome testing.....	11
3. Capital Resources.....	13
3.1.1. Capital Risk Appetite.....	13
3.1.2. Capital Risk Management.....	13
3.1.3. Capital Resources.....	13
3.1.4. Key capital risk mitigations.....	14
3.1.5. Key capital risk metrics.....	14
3.1.6. The leverage ratio.....	14
4. Credit risk.....	15
4.1.1. Credit risk mitigation.....	16

5. Liquidity risk.....	17
5.1.1. Liquidity risk management	17
5.1.2. Liquidity ratios	17
6. Strategic risk	18
7. Market risk	19
8. Operational risk	20
9. Conduct risk.....	21
10. Regulatory risk.....	22
11. Financial crime risk.....	23
12. Reputational risk.....	24
13. Remuneration.....	25
13.1. Approach to remuneration.....	25
13.2. Methods of Remuneration	25
13.2.1. Fixed Pay.....	25
13.2.2. Variable Pay	25
13.2.3. Share Awards	25
13.3. Remuneration decision making process.....	25
13.4. Remuneration for material risk takers (MRT).....	26

1. Introduction

1.1. Overview

This document provides the Pillar 3 disclosures required of Chetwood Financial Limited as at 31 March 2018.

Chetwood Financial Limited is authorised by the Prudential Regulation Authority ('PRA') and regulated by the PRA and the Financial Conduct Authority ('FCA').

The purpose of this document is:

- to provide useful information on the capital and risk profile of Chetwood Financial Limited and
- to meet the regulatory disclosure requirements under the Capital Requirements Regulation (EU) No 575/2013 ("CRR"), Part 8 – Disclosure by institutions and the rules of the Prudential Regulation Authority ("PRA") set out in the Public Disclosure section of the PRA Rulebook and as the PRA has otherwise directed.

This document should be read in conjunction with the annual report and financial statements for the period ended 31 March 2018. Given that Chetwood only commenced its lending operations in February 2018, with customer assets of £3.7m on the balance sheet as at financial year end on 31st March 2018, this Pillar 3 disclosure contains a level of data or analysis that is consistent with the size and lack of maturity in the balance sheet.

1.2. Summary analysis

A high level summary of the key capital ratios for Chetwood Financial Ltd as at 31st March 2018 is provided below:

	As at 31 st March 2018
Common Equity Tier 1	£5,284
Tier 1 Ratio	45%
Total Capital Ratio	45%
Risk Weighted Assets (£m)	£11.8m
Leverage Ratio	74%

Credit Risk Weighted Assets (RWAs)

Credit Risk RWAs as at 31st March 2018 were £3.3m, made up of £2.8m customer lending, and £0.5m lending to banks.

1.3. Disclosure policy

The following sets out a summary of the Company's Pillar 3 disclosure policy, including basis of preparation, frequency, media and location, verification and risk profile disclosure.

1.3.1. Basis of preparation

This document sets out the disclosures under Part VIII of the Capital Requirements Regulation (EU Regulation 575/2013, the "CRR"), which represents the Pillar 3 regulatory disclosure requirements in the UK under CRD IV. No material disclosures have been omitted and nor have any disclosures been omitted from this document for confidentiality purposes.

1.3.2. Frequency, media and location of disclosures

The Company's policy is to publish the Pillar 3 disclosures on an annual basis in conjunction with the annual report and financial statements. The Pillar 3 disclosures are published on the Company's website www.chetwood.co.

The frequency of disclosure will be reviewed should there be a material change in any approach used for the calculation of capital, business structure or regulatory requirements.

1.3.3. Verification

The Pillar 3 disclosures have been reviewed and approved by the board of directors who are satisfied that the disclosures accurately and comprehensively describe the Company's risk profile. The disclosures are not subject to audit.

2. Risk management objectives and policies

Effective risk management is integral to Chetwood's business model and strategy. The responsibility for identifying and managing the risks of the business rests with the business functions. The Board has ultimate responsibility for overseeing the Company's strategy, risk appetite and control framework. The Board considers Chetwood has in place adequate risk management and controls with regard to the Company's risk profile.

2.1. Key risks

Within the Chetwood business model, the Board has identified the following key risk areas for regular review and management:

- Strategic Risk - the risk which can affect Chetwood's ability to achieve its corporate and strategic objectives either through the strategy failing to respond to changes in the market or management taking poor strategic decisions or poorly executing such decisions;
- Capital Risk - the risk that Chetwood has insufficient capital to cover regulatory requirements and/or the growth plans of the business;
- Liquidity risk - the risk that Chetwood is not able to meet financial obligations as they fall due or can do so only at excessive cost;
- Market risk - the risk that the value of, or net income arising from, the Company's assets and liabilities changes as a result of changes to market factors, in particular interest rates, exchange rates or equity prices;
- Credit risk - the risk of financial loss arising from the borrower or a counterparty failing to meet their financial obligations to the Company in accordance with agreed terms;
- Operational risk - the risk of loss resulting from inadequate or failed internal processes, people and systems or from external events. This risk includes technology, information security, change management, outsourcing, people, legal and financial control risks;
- Conduct risk - the risk that products or services result in poor outcomes for customers as a result of inappropriate culture, internal practices, decision making, conflicts of interest or poor product governance;
- Regulatory risk - the failure to comply with, or effectively respond to changes in, applicable regulations, principles, codes of conduct and standards of good practice resulting in regulatory sanctions, financial loss or reputational damage;
- Financial crime - the risk of Chetwood's products, systems or assets being abused for the purposes of money laundering, terrorist financing, bribery and corruption or fraud resulting in material financial loss, legal or regulatory sanctions or reputational damage;
- Reputational risk - defined as the potential negative consequences arising from a failure to meet the expectations and standards of our customers, investors, regulators or other counterparties during the conduct of any of our business activities. This includes not just the

Company itself but all employees and other agents acting for, or otherwise associated with, Chetwood.

2.2. Risk strategy

Chetwood's risk appetite is formulated to support and maintain financial soundness, confidence from stakeholders and operational resilience. This will ensure that the following strategic risk objectives are met:

1. fair outcomes for customers by designing and selling clear and transparent products that consistently meet customer needs;
2. a positive reputation and confidence amongst all its stakeholders including customers, employees, distribution partners, investors and regulators;
3. sustainability and on-going viability through effective capital and liquidity management;
4. operational stability and resilience including through our third party providers; and
5. manage the risk appetite in line with our strategic plan and direction.

Chetwood's risk strategy actively selects customers, products and policies to deliver an acceptable risk adjusted level of return.

Chetwood has adopted a selective approach to the formulation of its risk appetite, designing out risk from a number of areas of the business, thus creating headroom to deploy its risk appetite in strategically relevant parts of the business, namely credit and operational risk, directly connected with delivering smooth digital customer journeys.

Chetwood will also seek out and deploy new and innovative solutions that will help to optimise risk management, such as artificial intelligence solutions within credit assessment or 'regtech' solutions across our risk framework.

2.3. Risk management Framework

The Company's approach to risk management involves a number of interconnected frameworks creating an Enterprise-wide Risk Management Framework (ERMF) to address the key risks to which the Company is exposed. These are identified, assessed, managed, monitored and reported.

The application of the risk frameworks includes all material risk types facing the Company and comprises risk strategy, governance and escalation, risk operating model, risk management processes, monitoring and reporting and risk culture.

2.4. Risk Culture

Underpinning the effectiveness of the ERMF is a strong risk culture which sets the tone for the Company, influencing the risk consciousness of employees as they conduct their daily activities and pursue business objectives. Chetwood's strong risk culture ensures that current and potential risks are a key consideration in all decisions and that risk management is embedded in all of our processes.

2.5. Risk governance and control

Chetwood's risk governance is the architecture within which risks are identified, assessed, managed, monitored and reported. The Board looks to senior management to ensure that the risk management framework and risk governance structure is applied in practice and operates robustly. The Board Risk Committee assists the Board in overseeing the effective design and operation of the risk management framework through the review of risk-related information.

It is the Board that approves the risk appetite that defines the type and level of risk that the Company is prepared to take in pursuit of its business plan. The risk appetite is expressed in the form of a series of strategic risk objectives and risk appetite metrics with a limit structure in place to ensure delivery against appetite.

The diagram below illustrates Chetwood's current risk management governance structure.

Chetwood has a number of distinct committees with a responsibility for risk management oversight, arranged as follows:

- Board Risk Committee (BRC) - a sub-committee of the Board, dedicated to scrutinising risk matters and to approve the risk appetite of the Company under its delegated authority from the Board;
- Credit Committee – a sub-committee of the Executive Committee (ExCo), tasked with scrutinising retail credit risks;
- Legal, Operational, Reputational & Compliance (LORC) Committee – a sub-committee of the ExCo, tasked with control and oversight regarding operational risk, regulatory compliance, conduct risk and financial crime matters;
- Assets & Liabilities Committee (ALCO) – a sub-committee of the Executive Committee, tasked with monitoring the Company's Solvency and Liquidity;
- Technology, Change and Cyber Committee (TCCC) – a sub-committee of the executive committee tasked with monitoring the Company's technology, change management agenda and cyber security implementation;
- Product & Pricing Committee (PPC) - a sub-committee of the Executive Committee tasked with the approval of new products and review performance for existing products, together with oversight of pricing strategies.

2.6. Risk operating model

Chetwood employs a 'Three Lines of Defence' model which defines clear responsibilities and accountabilities, thereby ensuring effective independent assurance over key business activities.

- 1st line of defence is responsible for identifying, assessing and managing risks and controls related to their own business line activities on a day-to-day basis. First line colleagues operate the business in accordance with the risk management framework and ensure that its requirements are translated into effective operating processes;
- 2nd line of defence is the Risk Function, which is independent of the first line and is responsible for overseeing the application of the risk management framework and ensuring

that the business operates within the risk appetite, limits and tolerances that have been set by the Board;

- 3rd line of defence is the Internal Audit function, which provides independent assurance over the adequacy of the first and second line activities in relation to all aspects of the business including the effectiveness of the risk management practices and internal controls.

2.7. Monitoring and Reporting

Risk monitoring ensures that the selected risk management approach is working effectively, the key requirements of which include:

- Monitoring key risk exposures on a regular basis, with the frequency depending upon the materiality of the risk;
- Monitoring key risks and invoking actions as necessary;
- Agreeing corrective action plans with business areas where the risk monitoring outcomes demonstrate that the risk management approach is not operating as intended;
- Risk reporting provides the Board, ExCo and senior management with an accurate, timely and clear account of the current risk exposure and helps to highlight any risks to the achievement of business objectives.

Reporting requirements for each of the level 1 risk categories is set out in the individual policies and standards. These are further supported by subordinate policies where necessary. Such reporting includes:

- Regular reporting of key metrics (key risk indicators etc.) and other measures for monitoring control effectiveness and risk exposures against appetite;
- Escalation and reporting of policy breaches and significant control weaknesses;
- Material incidents, including near miss and loss events;
- Progress reporting on control remediation and action plans designed to bring risk exposures back within appetite.

2.8. Risk management processes

The risk management processes described below outline the key requirements for the way in which risk management is conducted across Chetwood.

The process seeks to identify the risks to which Chetwood is exposed across each of the material risk categories. The risk identification process requires in-depth knowledge of the Company's strategic objectives, business objectives and operational processes and includes a detailed review of the risk factors that could impact Chetwood. Consideration is given to the potential impact upon elements such as the balance sheet, profit and loss, customers, employees, reputation, regulators, investors and other stakeholders.

A regular risk review cycle is integrated into the business planning process, new product development and project management process.

2.8.1. Risk measurement

Risk measurement quantifies the risks to the business and allows the selection of the appropriate means to manage the risk and enables appropriate resources to be dedicated to risk management.

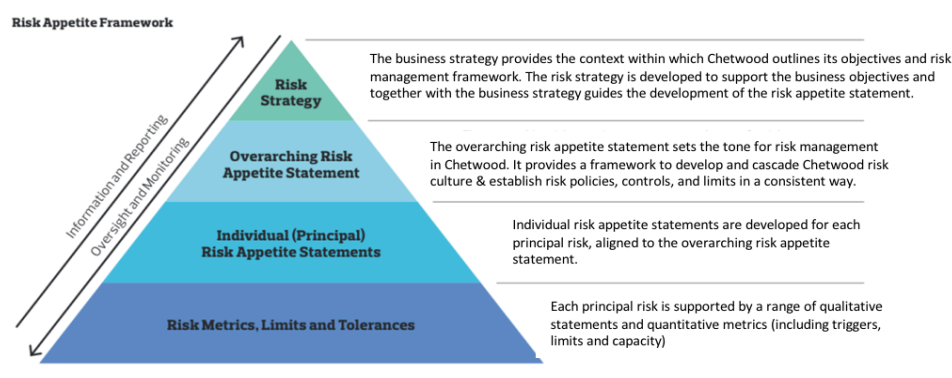
2.8.2. Risk appetite

Chetwood's Risk Appetite Framework is the overarching framework through which we set individual risk appetites for each principal risk. It also sets out how we monitor performance against the risk appetites.

The risk appetite framework comprises the following:

1. Overarching Risk Appetite Statement. This is the primary statement outlining our approach to risk-taking in pursuit of our business strategy;
2. Individual Risk Appetite Statements. The articulation of the type and level of specific risks that we are willing to take, tolerate or avoid (for each Principal Risk);
3. Risk Capacity assessment metrics, limits and tolerances. The maximum level of risk we can assume before breaching constraints determined by regulatory capital or liquidity needs;
4. Risk. Quantitative or qualitative measures that allocate our aggregate risk appetite statements to individual business activities. These may be expressed in terms of minimising (those risks we should avoid), maximising (those risks we like to take), or optimising (those risks we should tolerate and control);
5. Risk Profile assessment. The point in time assessment of our risk exposures.

These key stages in implementing and running a risk appetite framework are summarised below:



Alongside this definition of our risk appetite framework Chetwood recognises that to truly embed risk appetite within the organisation it is and will remain committed to hire and retain appropriately skilled people, in the right roles (and structure), which put in place processes and policies that:

1. Set the strategic plan and objectives as well as the risk strategy and risk capacity;

2. Articulate and cascade risk appetite statements and limits, giving due regard to stress testing outputs;
3. Monitor and report risk profile versus appetite; and
4. Control and correct the risk profile should it deviate from appetite and reassess the risk appetite or strategy (should the need arise) in the light of changes in the business, competitive or control environments.

The Board have approved the following principal risk categories which are commented upon further in this document:

1. Strategic Risk
2. Capital Risk
3. Liquidity Risk
4. Market Risk
5. Credit Risk
6. Operational Risk
7. Conduct Risk
8. Regulatory Risk
9. Financial Crime Risk
10. Reputational Risk

2.8.3. Risk management

Risk management is the process of identifying an appropriate strategy to address the risk or issue in question including acceptance, avoidance, transfer and mitigation.

Chetwood's risk governance structure including committees and the three lines of defence, is responsible for ensuring the effectiveness of the chosen risk management approach. In the case of risk mitigation risk owners and senior management will ensure ongoing monitoring is in place to manage the risk effectively.

2.8.4. Risk Control Self-Assessment (RCSA)

The RCSA methodology is a key risk management processes that was in the course of implementation in 1st Quarter 2018. Implementation progress is reported to Exco and Board Risk Committee. Full implementation is expected by 4th Quarter 2018.

When fully complete, RCSA activity is supported by the second line of defence through the provision of tools, training and guidance, however each RCSA belongs to a specified 'risk entity'.

Chetwood's key control population, as identified through the RCSA process, is subject to a regular testing and attestation process to ensure that there is a robust control environment in operation.

2.8.5. Key and Emerging Risk Register

Chetwood's 'Key Risks' are current, emerged risks that have arisen across any of the risk categories and have the potential to have a material impact on the Company's financial position, reputation, or on the sustainability of the business model and which may form and crystallise within a year. 'Emerging risks' are those with potentially significant, but uncertain, outcomes which may form and crystallise beyond a one-year horizon, and which could have a material impact on Chetwood's ability to achieve its long-term strategy.

The identification and monitoring of these risks is integral to the risk management framework and informs business planning activities. It also ensures that risk strategies and activities are appropriately focused upon addressing these concerns.

Chetwood's Key and Emerging Risk Register is reviewed regularly by the Executive team and is reported to the BRC.

2.8.6. Stress testing and scenario analysis

Chetwood recognises the importance of stress testing as a key risk management tool and its robust stress testing approach enables the Company to assess its risk appetite under expected and stressed operating conditions. Both regulatory and in-house stress scenarios are conducted by Chetwood. Stress testing enables an informed understanding and appreciation of Chetwood's capacity and resilience to withstand shocks of varying severity. Additionally, stress testing is a key tool in assisting the business in strategic and capital planning and is critical in assessing the capital and liquidity requirements for the Company's ICAAP and ILAAP.

Scenario analysis focuses on those events that are extreme, but plausible. The objective of scenario analysis is to determine, through qualitative means (i.e. business experience, knowledge and judgement), the potential impact of low frequency, high impact events. The results of the scenario analysis are reported to the BRC and form a key input into determining whether the capital requirements that have been defined are sufficient and whether risk appetite has been set at the appropriate level. Scenario analyses based on quantitative assessments are also conducted where there is a wealth of market data, such as the assessment of the Company's interest risk in the banking book (IRRBB).

2.8.7. Compliance and customer outcome testing

The Compliance Framework is used to provide assurance to the Board, ExCo and senior management on the adequacy of policies, procedures, systems and controls to ensure compliance with Chetwood's obligations under the regulatory system.

A risk-based compliance monitoring plan is prepared on an annual basis, outlining both the thematic and on-going monitoring activity that will be undertaken in the following 12 month period. The compliance monitoring approach considers both quantitative and qualitative metrics to provide assurance over the delivery of fair customer outcomes and focuses activity on the following key areas: customer complaints, responsible lending, arrears and collection activity, mortgage intermediary practices and financial promotions and marketing material.

The Head of Compliance reviews the monitoring plan on a quarterly basis to ensure that it remains in line with business and regulatory requirements.

3. Capital Resources

3.1.1. Capital Risk Appetite

Capital Risk is the risk that Chetwood has insufficient capital to cover regulatory requirements and/or the growth plans of the business (which are considered key over the next 12 months).

Chetwood will maintain sufficient capital to cover its TCR requirements that are set by our regulators, with sufficient surplus to ensure that corrective action can be implemented before capital ratios are threatened.

If necessary, balance sheet growth and/or costs will be constrained until such time as the board is comfortable with the forecast capital position.

3.1.2. Capital Risk Management

The Company's capital planning and management approach establishes a framework for maintaining current and prospective capital at an appropriate level under various scenarios. Current and forecast levels of capital are monitored against the capital risk appetite approved by the Board and reported to ALCO, the Executive Committee, Board Risk Committee and the Board on a regular basis. The capital forecast forms an integral component of the annual budgeting process and is updated in line with changes to the business plan. The capital forecast incorporates the impact of known forthcoming regulatory changes to ensure that the Company is well positioned to meet them when implemented.

3.1.3. Capital Resources

The regulatory capital resources managed by the Company as at 31 March 2018 are as follows:

	£ '000
Share capital	9,451
Share premium	2,851
Retained earnings	(6,519)
Intangible assets	(499)
Common equity tier 1 capital	<hr/> 5,284
Tier 2 capital	47
Total regulatory capital	<hr/> 5,331 <hr/>

Current and forecast levels of capital resources are monitored and reviewed by ALCO, the Executive Committee and the Board on a regular basis. The Company operated above its regulatory capital requirements throughout the period.

3.1.4. Key capital risk mitigations

Chetwood's risk appetite is to avoid any situation which gives rise to capital risk i.e. that it cannot meet its regulatory obligations. Chetwood will maintain sufficient capital to cover its Total Capital Requirement (TCR) that are set by our regulators, with sufficient surplus to ensure that corrective action can be implemented before capital ratios are threatened.

3.1.5. Key capital risk metrics

The following risk appetite metrics have been approved by the board, and monitored on an ongoing basis:

The board has established limits and triggers for the following metrics, against which management closely assess compliance, with monthly reporting to ALCO and the Board Risk Committee.

1. Chetwood has no appetite for ever breaching TCR requirements set by the regulator and aims to have an appropriate surplus above this during normal trading conditions, as measured by capital surplus over the TCR
2. Treasury Credit Risk. Chetwood will comply with the large exposures regime at all times, as measured by the percentage of capital held with a singly counterparty.

3.1.6. The leverage ratio

As noted earlier in this paper, Chetwood only commenced lending operations in February 2018, with a commensurately small balance sheet of £3.7m as at the financial year end. At this stage, the leverage ratio stood at 74%.

4. Credit risk

Credit risk is the risk of financial loss arising from the borrower, or a counterparty, failing to meet their financial obligations to the Company in accordance with agreed terms.

The risk arises primarily from the Company's lending activities as a result of a defaulting loan or mortgage contract. Credit risk also exists with treasury assets where the Company has acquired securities or placed cash deposits with other financial institutions.

Lending products are a core aspect of Chetwood's purpose and strategy with the business model aligned to the growth in unsecured and secured RWA's. As a result, Credit is a Principal Risk that the Company likes to take.

The Company has set an overall credit risk appetite for lending activities, with expected losses factored into the budgeting and forecasting process which reflect emerging performance data and prevailing economic data. The Company recognises that actual losses may differ from forecasted or budgeted values.

The Company uses the standardised approach in determining the level of capital to be held for regulatory purposes, which requires total capital of 8% to be set aside for its risk weighted assets under its Pillar 1 assessment.

The total financial statement position exposure as at 31 March 2018 is summarised as follows:

	As at 31 March 2018
	£ '000
Cash in hand	2,499
Net loan receivables	3,683
Total financial statement position exposure	<u>6,182</u>

All loans and advances to customers are unsecured personal loans with no collateral held as security. Of the 785 loans on the book at 31 March 2018, there were 3 which were in arrears at the reporting date.

The Company's lending portfolio (by number of accounts) falls into the following concentration by loan size:

	As at 31 March 2018
	%
£0 - £10,000	96
£10,001 - £12,000	4

4.1.1. Credit risk mitigation

The Company deploys a number of techniques and strategies to build a credit portfolio in line with its stated risk appetite and strategic plan. This mainly involves the use of credit scoring and policy rules together with an affordability model that assesses an individual's ability to service the loan that has been applied for. These models will be constantly updated to reflect credit experience as the lending book grows.

5. Liquidity risk

Liquidity risk is the risk that Chetwood is not able to meet its financial obligations as they fall due or can do so only at excessive cost.

The risk appetite of the Company is that this risk is to be avoided, with the Company holding excess liquidity significantly over and above its regulatory minima until such time as its cash flow forecasts and assumptions are mature and can be relied upon. This is expected to be a minimum of 24 months after deposit taking commences.

5.1.1. Liquidity risk management

To protect the Company against liquidity risks, a liquidity buffer is maintained which is based on the liquidity needs under stress conditions. The liquidity buffer is monitored on a daily basis to ensure that sufficient liquid resources are maintained to cover all forecast cash flow movements and to support anticipated asset growth.

Through Chetwood's ILAAP process, an assessment is made on the extent of liquidity required to cover both systemic and idiosyncratic risks. The ILAAP process determines the appropriate liquidity buffer taking into account the specific nature of the future deposit base (which is dependent on Chetwood completing its mobilisation process) and other liquidity drivers.

Liquidity risks are specifically considered by ALCO on at least a monthly basis.

5.1.2. Liquidity ratios

Given Chetwood's current stage in its development cycle, and particularly the absence of retail deposits and wholesale funding, the calculation of a Liquidity Coverage Ratio (LCR) does not give a meaningful output, due to the absence of outflows which results in a zero denominator within the LCR ratio. Consequently, it is not possible to calculate an accurate LCR ratio as at 31st March 2018.

The Company's Net Stable Funding Ratio as at the 31st March 2018 was 133%, which is above the minimum level of 100%.

6. Strategic risk

Strategic Risk is the risk which can affect Chetwood's ability to achieve its corporate and strategic objectives either through the strategy failing to respond to changes in the market or management taking poor strategic decisions or poorly executing such decisions.

The Strategic Risk appetite is measured in terms of the deviation against key performance indicators which form part of Chetwood's business plan. Overall, given the nature of the market entry embedded within the strategic plan a level of volatility is anticipated in the early years of the business.

Given the early stage in the deployment of the strategic plan no material deviations against the risk appetite were experienced as at 31st March 2018.

7. Market risk

Market risk is the risk that the value of, or net income arising from, the Company's assets and liabilities changes as a result of changes to market factors, in particular interest rates, exchange rates or equity prices. The main market risk faced by the Company is interest rate risk which is the risk of loss through mismatched asset and liability positions sensitive to changes in interest rates. Interest rate risk consists of asset-liability gap risk and basis risk.

The Company's risk appetite is that Interest Rate risk is generally to be tolerated within closely observed limits, with any exposure to risk arising from exchange rate or equity prices to be kept to an absolute minimum.

Chetwood will not carry out proprietary trading, although certain liquid asset investments which form part of the liquid asset buffer carry mark to market risk which will be regularly monitored. These investments are held in government securities.

As at 31 March 2018, the Company was not sensitive to interest rate risk. All loans to customers are fixed rate and the Company held no liabilities at variable interest rates at 31 March 2018. The Company does not hold foreign currency, carry out proprietary trading or hold any positions in assets or equities which are actively traded.

8. Operational risk

Operational risk is the risk of loss resulting from inadequate or failed internal processes, people and systems or from external events. This risk includes technology, information security, change management, outsourcing, people, legal, and financial control risks.

Chetwood aims to maintain robust, proportionate and customer-focused operational systems and controls that enables execution of the Company's business strategy but within an acceptable level of operational risk, aiming for risks to be taken without creating unacceptable operational losses; customer detriment; failures to meet regulatory requirements; or reputational impacts. To support this, Chetwood will act proactively to identify emerging risks and in a timely manner to mitigate these. The operational risk appetite considers risk events and the assessment of internal controls as well as holding additional capital for certain operational risks.

The Operational Risk requirement for the Company under Pillar 1 is calculated using the Basic Indicator Approach. Given the early stage of Chetwood's development this has been based upon forecast growth as per Chetwood's strategic plan. The capital requirement under this approach as at 31st March 2018 was £8.1m.

9. Conduct risk

Conduct risk is the risk that products or services result in poor outcomes for customers as a result of inappropriate culture, internal practices, decision making, conflicts of interest or poor product governance.

Chetwood has absolutely minimal risk appetite for systemic or material conduct risk issues. It is accepted that occasionally isolated instances may occur. In these circumstances, Chetwood will resolve the issue as soon as possible, remedy any customer detriment immediately and promptly take any remedial action necessary to prevent reoccurrence.

Given the infancy of customer lending as at 31st March 2018, there are no material issues to report.

10. Regulatory risk

Regulatory risk is the failure to comply with; or effectively respond to changes in applicable regulations, principles, codes of conduct and standards of good practice resulting in regulatory sanctions, financial loss or reputational damage.

Chetwood has absolutely minimal risk appetite for systemic or material regulatory risk issues. It is accepted that occasionally isolated breaches may occur. In these circumstances, Chetwood will resolve the issue as soon as possible, remedy any customer detriment immediately and promptly take any remedial action necessary to prevent reoccurrence.

Given the infancy of customer operations as at 31st March 2018, there are no material issues to report.

11. Financial crime risk

Financial crime is the risk of Chetwood's products, systems or assets being abused for the purposes of money laundering, terrorist financing, bribery and corruption, or fraud resulting in material financial loss, legal or regulatory sanctions or reputational damage.

Chetwood has absolutely minimal risk appetite for systemic or material financial crime risk issues. It is accepted that occasionally isolated breaches may occur. In these circumstances, Chetwood will resolve the issue as soon as possible, remedy any customer detriment immediately and promptly take any remedial action necessary to prevent reoccurrence.

Given the infancy of customer operations as at 31st March 2018, there are no material issues to report.

12.Reputational risk

Reputational risk is defined as the potential negative consequences arising from a failure to meet the expectations and standards of our customers, investors, regulators or other counterparties during the conduct of any of our business activities. This includes not just the Company itself but all employees and other agents acting for, or otherwise associated with, Chetwood.

At Chetwood, our purpose is to “use technology to make people better off” and to “always act with the customer’s best interests at heart”. As a result, we naturally have a minimal appetite for reputational risk. We will seek to eliminate the potential for material risk events of this nature by:

- all employees being aware of their expected behaviours under the Code of Conduct;
- not knowingly engaging in any activity or association where foreseeable reputational damage to Chetwood has been identified;
- identifying and assessing reputational risk events with the Board and establishing clear mitigating plans and actions; and
- maintaining open and transparent relationships with regulators and other key stakeholder groups.

Given the infancy of customer operations as at 31st March 2018, there are no material issues to report.

13. Remuneration

13.1. Approach to remuneration

At Chetwood our purpose is to “use technology to make customers better off”.

When recruiting, we seek people with the right values, who will generally not be motivated by short term financial gain or variable reward. Our approach to remuneration seeks to ensure that all our people are fairly rewarded and have a real stake in the future success of the firm.

For the purposes of establishing the Company’s Remuneration Policy, Chetwood has been assessed as a “proportionality level 3” firm. The policy is to set remuneration levels which are aligned with the overall Risk Appetite and to ensure that Executive Directors, senior management and employees are fairly and responsibly rewarded in return for high levels of individual and business performance.

13.2. Methods of Remuneration

The following approach is adopted in establishing remuneration for Chetwood employees and directors.

13.2.1. Fixed Pay

Chetwood will pay at or around market pay, adjusted for local geography as appropriate. Some specialist roles have a more national market, and Chetwood will seek external advice as required when benchmarking.

Fixed pay is set individually, a practice we expect to continue, although as the business grows and we have more people carrying out similar roles, we will review like roles together to ensure fairness and monitor any gender pay gap.

Further details on this approach can be found in the Annual Report & Accounts (Notes to the Financial Statements Sections 5 & 6).

13.2.2. Variable Pay

No variable pay scheme was in place at any time throughout the financial year ending 31st March 2018.

13.2.3. Share Awards

No performance-based share awards were made at any time throughout the financial year ending 31st March 2018. During the start-up phase of the business, equity has been granted to a small number of Executive and Senior Management in lieu of salary and/or market rates of total compensation.

13.3. Remuneration decision making process

Chetwood has established a remuneration committee (Remco) comprising 3 non-executive directors. No non-executive director receives any variable pay. Whilst the firm remains below 100 employees, Remco will take a broad remit considering all aspects of remuneration for the whole firm. As Chetwood grows, that approach is likely to evolve with some areas of remuneration management likely to be delegated to other fora.

We will review salaries on an annual basis but will not normally carry out across the board “inflation” based pay rises. Any salary increments over 10% of base salary for staff will require approval by the CEO, any change to remuneration for Material Risk Takers (MRTS) will be approved by Remco.

Any individuals who are recruited into Chetwood with a salary in excess of £100k per annum will be approved by Remco, below this threshold decisions are made in by the respective ExCo members in conjunction with the Head of People.

13.4. Remuneration for material risk takers (MRT)

As at 31st March 2018, there were 16 employees who were designated as Material Risk Takers. No individual received any variable pay awards and no individual received total compensation in excess of £250k.